

Karl Brewster

Prairie Grove,

Washington County,

Arkansas.



Beautiful for Situation.
Pride of the Ozarks.
Center of the Fruit Belt.
Where Life is Worth Living.

NORTHWEST ARK. REALTY AND DEVELOPMENT CO.

INCORPORATED \$20,000.00.

R. A. STEWART, President.

W. G. COLLIER, Sec'y and Treas.

W. N. BUTLER, Vice-Pres. and Salesman. J. S. DILL, Gen. Ag't and Salesman.

REFERENCES.

We respectfully refer you to:

BANK OF PRAIRIE GROVE, Prairie Grove, Ark.

HOME BANK, Prairie Grove, Ark.

F. W. YOUREE, SR., Mayor Prairie Grove, Ark.

C. L. RICHARDS, Frisco Station Agent, Prairie Grove, Ark.

McILROY BANKING COMPANY, Fayetteville, Ark.

BANK OF FAYETTEVILLE, Fayetteville, Ark.

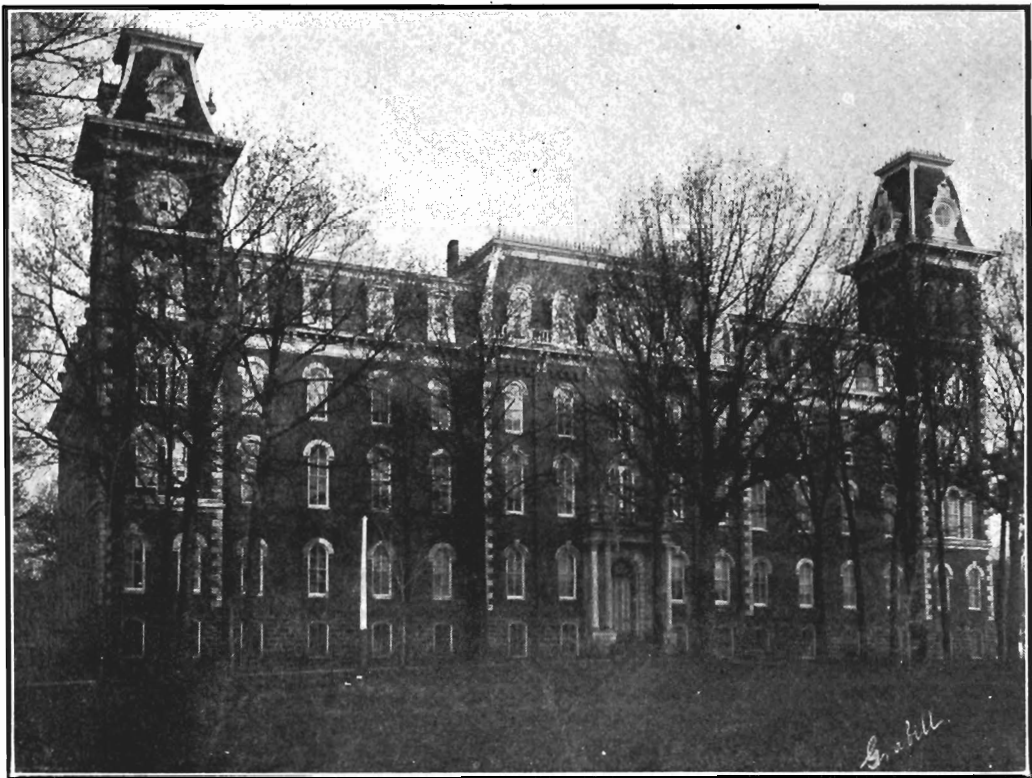
J. J. BAGGETT, Capitalist and Banker, Fayetteville, Ark.

WM. B. COLLINS, Associate Inter-State Manager Security Mutual Life Insurance
Co., Fayetteville, Ark.

INTRODUCTION.

WE offer you an opportunity of obtaining a limited number of lots in a thriving little city in the heart of the fruit-growing district of Northwest Arkansas, which needs no comment as to its merits, as it is now a well known fact that this section contains the best fruit orchards of the world.

It is the intention of the Northwest Arkansas Realty and Development Co. to place before the public the best Town Lot Proposition ever offered, for so small a sum of money. If you do not think the proposition a good one, and the money that you have paid for lots well spent, all you have to do is to demand it on the opening day, and it will be promptly returned to you.



UNIVERSITY OF ARKANSAS.



RESIDENCE OF W. F. BELL, NORTH MOCK STREET.

1904

THE TOWN SITE

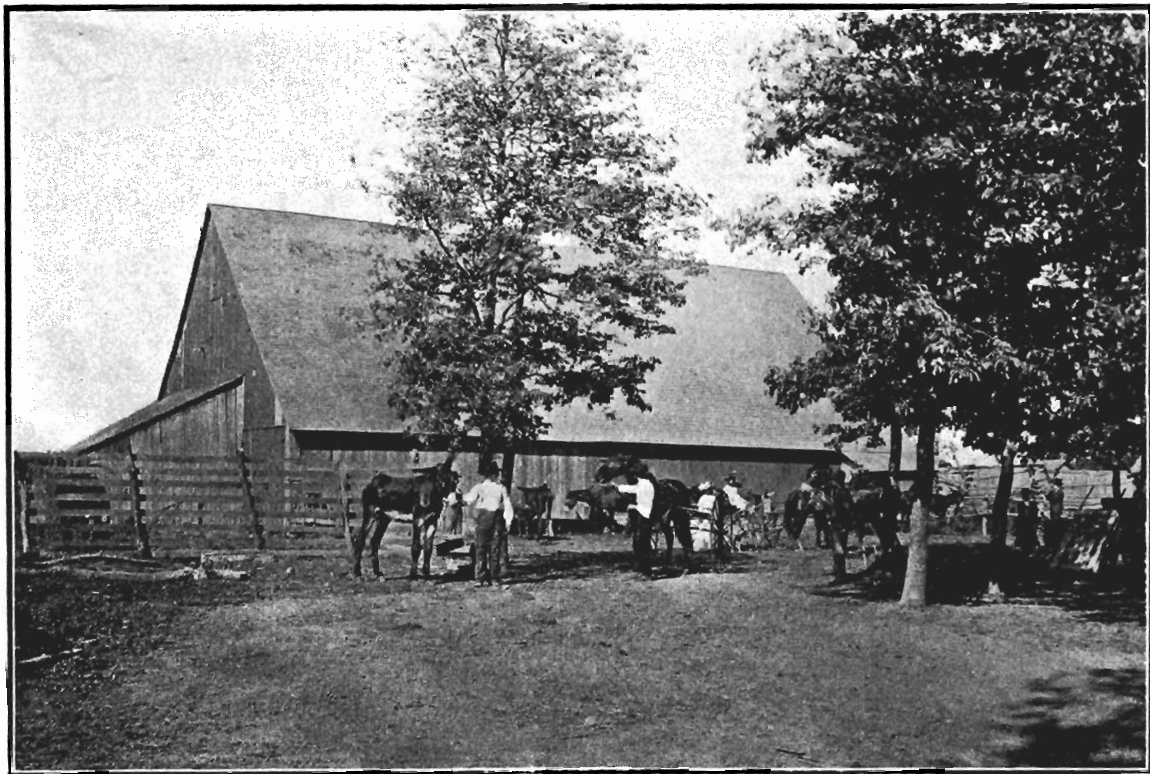
Prairie Grove is located on the ground where the noted battle, from which it derived its name, was fought on the 7th day of December, 1862. The location is healthful, sloping gently to the West, furnishing excellent drainage. The additions to this town which are now on sale, are as good as any now occupied, and in fact the business lots are more favorably situated, since they are near the Depot of the new railroad, having a better drainage, and most of them are fronting on an avenue one hundred feet wide.

AGRICULTURE

There is no country anywhere in which so nearly all of the necessities and luxuries of life can be as abundantly grown as in Northwest Arkansas. Corn, wheat, oats, and in fact all kinds of grain are raised in great quantities, and for hay and live stock of all kinds, it is second to none. Prairie Grove is located right in the center of the finest valley of land in the State. It is surrounded by miles and miles of the finest farm land, owned by wealthy farmers who will market almost all of their farm products at Prairie Grove, since it now has a Railroad.

RAIL ROADS

Prairie Grove is located on the Ozark and Cherokee Central Railroad, in Washington County, Ark., said road being a part of the Frisco system, and we can say for our town that



Barn of John E. Rogers, Breeder of Fine Stock, One and One-Half Miles North of Prairie Grove.



FRISCO DEPOT, PRAIRIE GROVE.



"LOCUST DELL," HOME OF DR. W. H. MOCK, TWO MILES SOUTH OF PRAIRIE GROVE.

we think it will soon be a railroad center, as there is now strong talk of two more roads :— one of the Frisco, and one of the Missouri Pacific system, which, together with its great resources, will soon swell her population to a city of the first class. There is now a well arranged and up-to-date Telephone system at Prairie Grove, and preparations are being made to make connection with long distance phones ; so with her Railroad facilities and wire connections, her wonderful resources will soon be made extensively known to the outside world, which will bring swarming, from less favored countries, people by the thousands.

LOCATION

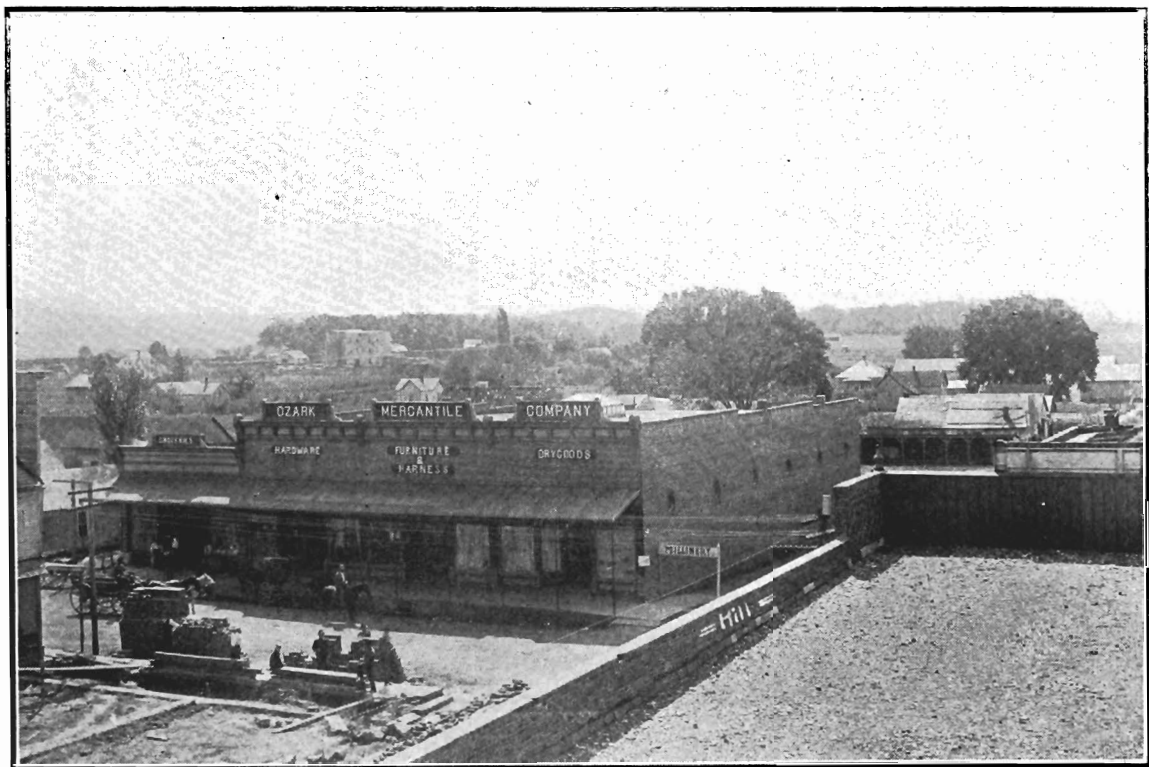
The location of Prairie Grove is ideal, surrounded by a large area of the finest agricultural and fruit growing lands, which are now highly improved. There being no towns of any importance for many miles, either South, West or North, she will command the principal part of the trade of this vast country, covering a radius of more than four hundred square miles. One of the greatest merits of Prairie Grove is her healthful climate and abundance of good water, as pure and cold as nature can yield. Almost every farm has a beautiful spring gushing from the earth in quantities sufficient to meet every demand ; and has soil especially adapted to the growing of grain, hay and fruit of all kinds ; and in fact, there is not a country in the world where so great a variety of farm products can be grown in quantities so satisfactory, and quality so delightful as in Northwest Arkansas, and we can cheerfully say that there is no town in the country as favorably located and as nearly surrounded by these great resources as Prairie Grove.



DR. E. G. McCORMICK'S RESIDENCE. MOCK AND BUSH STREETS.



RESIDENCE OF W. N. BUTLER. BUCHANAN AND PITTMAN STREETS.



BIRDS-EYE VIEW OF THE OZARK MERCANTILE CO., LOOKING SOUTHEAST.

THE TOWN OF PRAIRIE GROVE

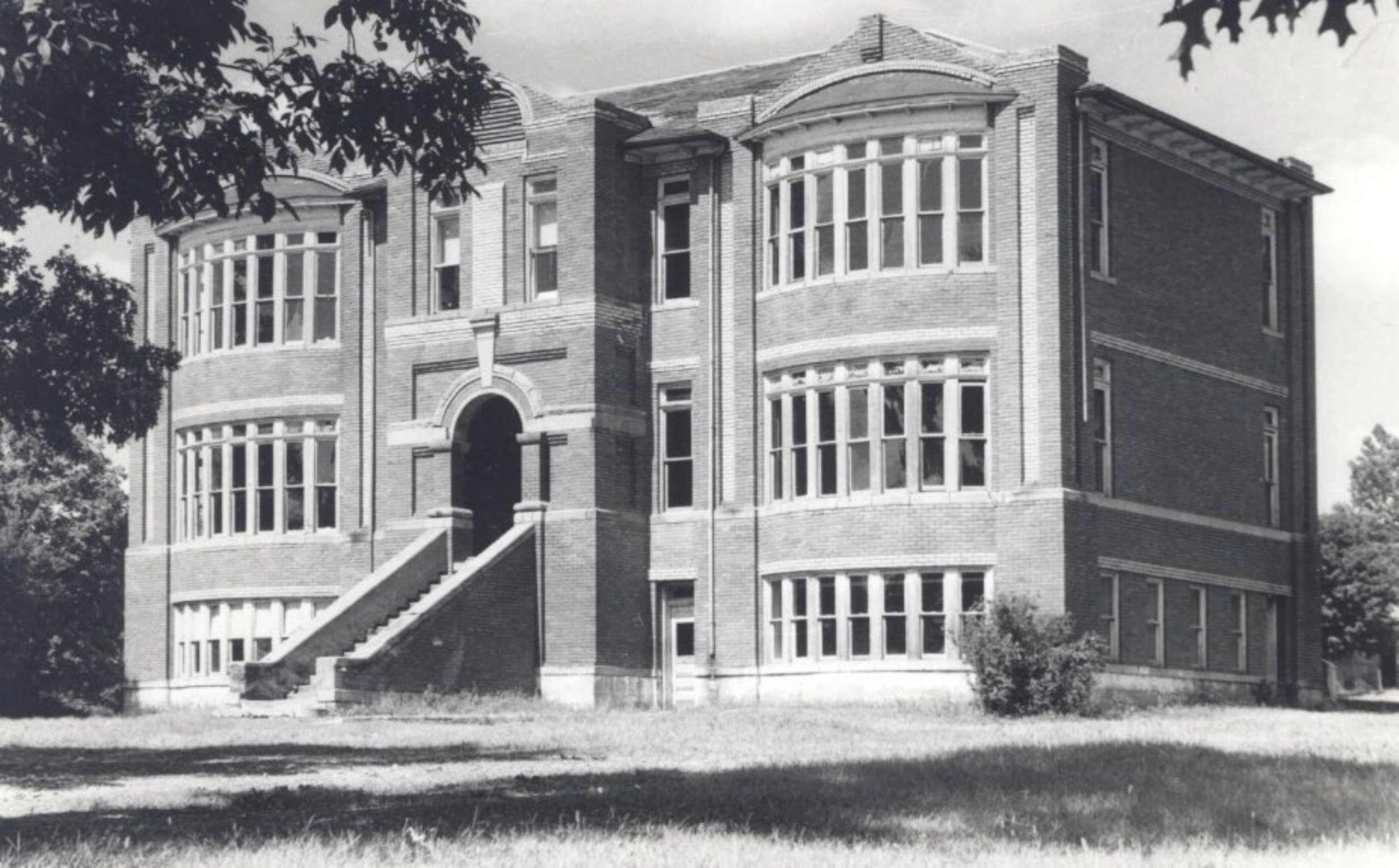
Although Prairie Grove has been laboring under the disadvantage of having no Railroad until recently, its abundant resources have given it a steady growth, and from the very inception of the railroad, owing to its wonderful advantages, property "went out of sight" in price, and today unimproved property is higher than in any other town of its size in the country. The town has twelve mercantile establishments, among which is a large department store, (see cut on page ten), carrying a \$30,000 to \$50,000 stock, and a well appointed up-to-date drug store; also we have two Banks, in which stock is selling at 40 to 50 per cent. premium; two Roller Mills, one Elevator, one Canning Factory, two Lumber yards, one Newspaper, one Livery Stable, two Butcher shops, three Barber shops, besides other industries too numerous to mention. A large and beautiful spring, as pure as ever nature afforded, arises in the center of the city, sending forth rippling through the town its cool, sparkling waters in a sufficient quantity to furnish water works, which will doubtless soon be installed. Strong indications of oil exist at various points near Prairie Grove. At one place a short distance South of town, the crude oil arises to the surface and escapes down a little stream of water. Oil leases have already been secured on nearly all of the adjacent country and rapid preparations are being made to develop this great resource at an early date.

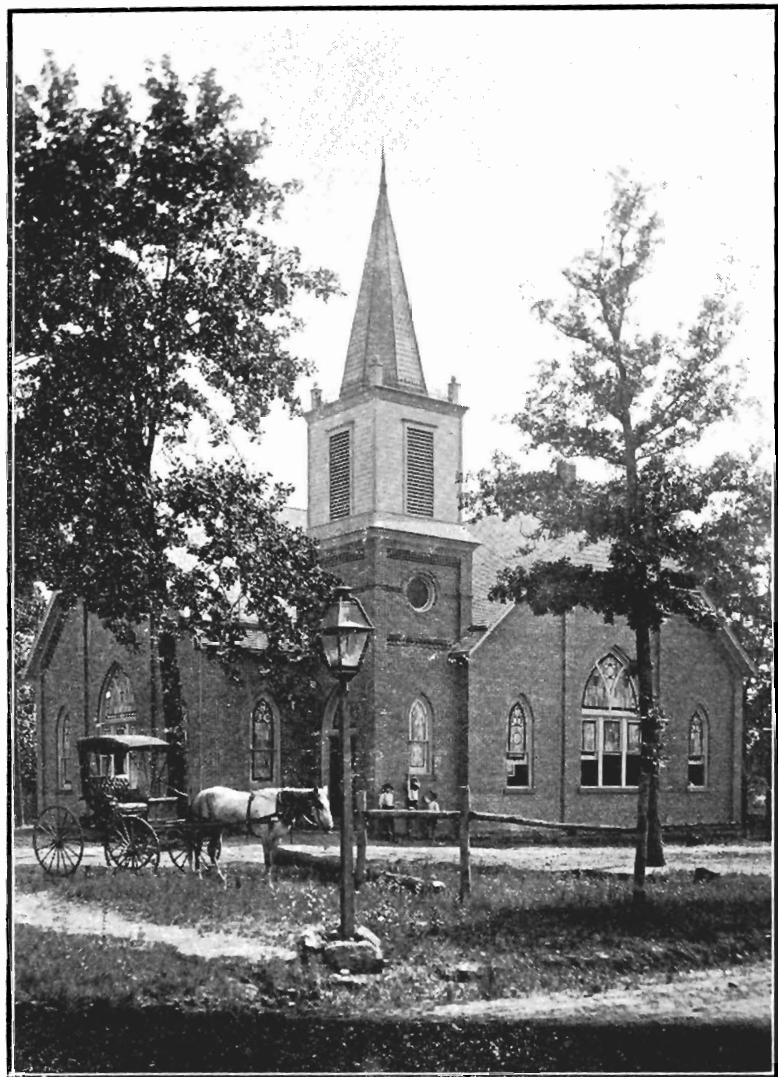


ONE OF PRAIRIE GROVE'S PUBLIC SCHOOL BUILDINGS.

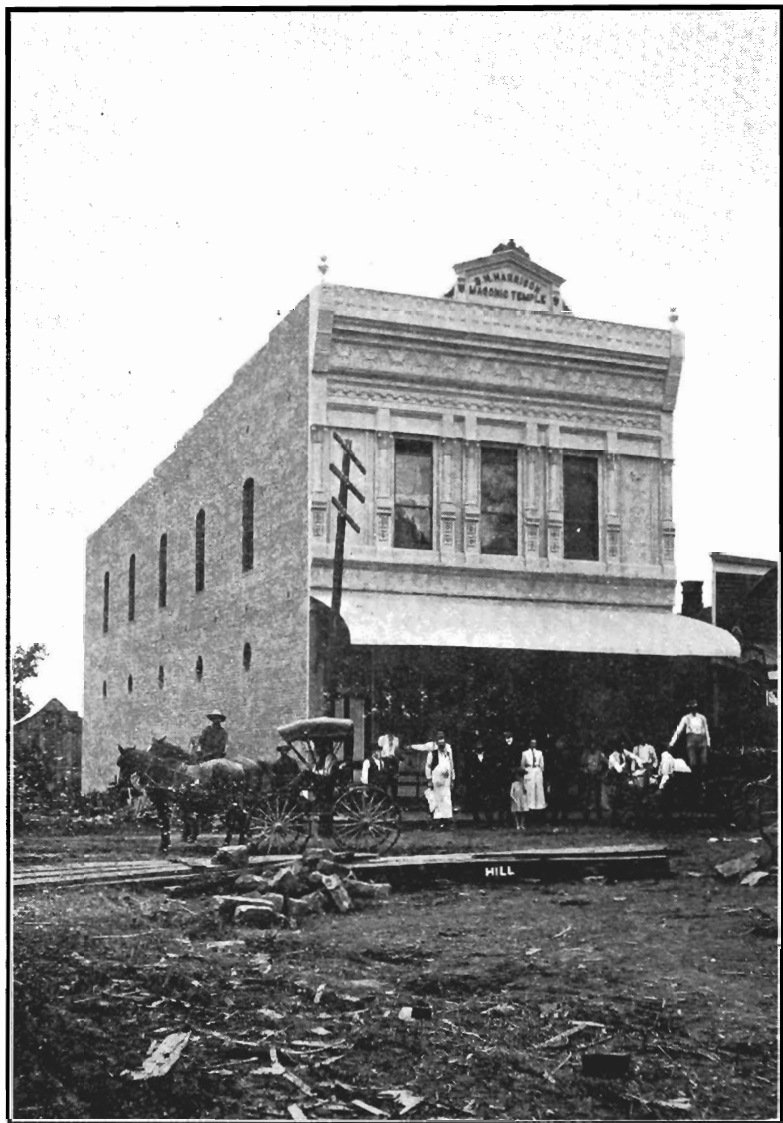
SCHOOLS

There are no better indications of a thriving town than a wide-awake and up-to-date interest in school work, and Prairie Grove has spared no pains in this behalf. It has put forth every effort to make the school work of such a high grade and modern method that there could be no objections raised to its work by persons from any section of our Union. We have two elegant and well equipped school buildings, (see cut on opposite page), both under the supervision of one principal, giving perfect harmony throughout all the grades. The school board has manifested rare wisdom in the selection of the principal, and a highly cultured gentleman, who is an honor to his town and his profession here or elsewhere, was the result of their search. His methods and work have given such entire satisfaction that his services have been secured for five years. As a preparatory course for the State University, our school will acknowledge no superior, the curriculum of which embraces a three years High School course, graduates from which may enter Freshman at the University of Arkansas without examination. Another advantage to those who would obtain a finished education is, the student can attend the University and spend Saturdays and Sundays in his Prairie Grove home, as this great school is also located in our county, (see frontispiece), and trains arrive from Fayetteville in the morning and return in the late afternoon.





M. E. CHURCH, SOUTH.



MASONIC TEMPLE.
WILSON & McMILLAN, MERCHANTS, FIRST FLOOR.



PRAIRIE GROVE HARDWARE CO.

BANK OF PRAIRIE GROVE.

CHURCHES

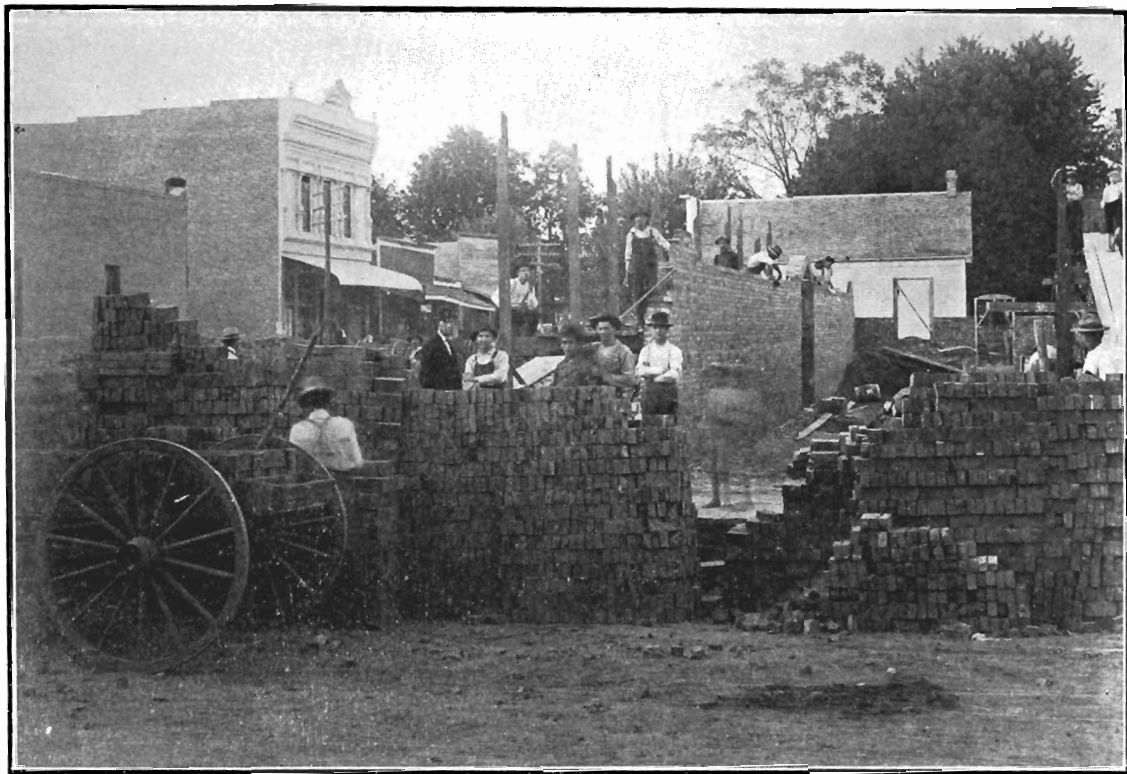
Prairie Grove has four churches, viz: Methodist, Baptist, Presbyterian and Christian, all supplied with fair congregations and gifted pastors, and when you visit Prairie Grove, we feel sure that you will find as great a degree of friendship, fellowship and brotherly-love existing between the churches here as can be found anywhere.

FRATERNAL ORDERS

Great interest is taken in the Fraternal orders at Prairie Grove. The Masons, Odd Fellows, Knights of Pythias and A. O. U. W. are organized here, and all have an extensive membership, in good working order.

PRAIRIE GROVE'S RESOURCES

Notwithstanding the fine agricultural surroundings of Prairie Grove her progress, until right recently, has been very much handicapped on account of having no Railroad, thereby necessitating the carrying by private conveyance, the vast amount of farm products raised in her immediate vicinity, to other towns for a market, but now since she has railroad facilities, she ships from four to five hundred cars, or sixty to eighty thousand barrels of apples in one season and the shipments will soon be much larger, as the farmers are rapidly adding vast acreage of



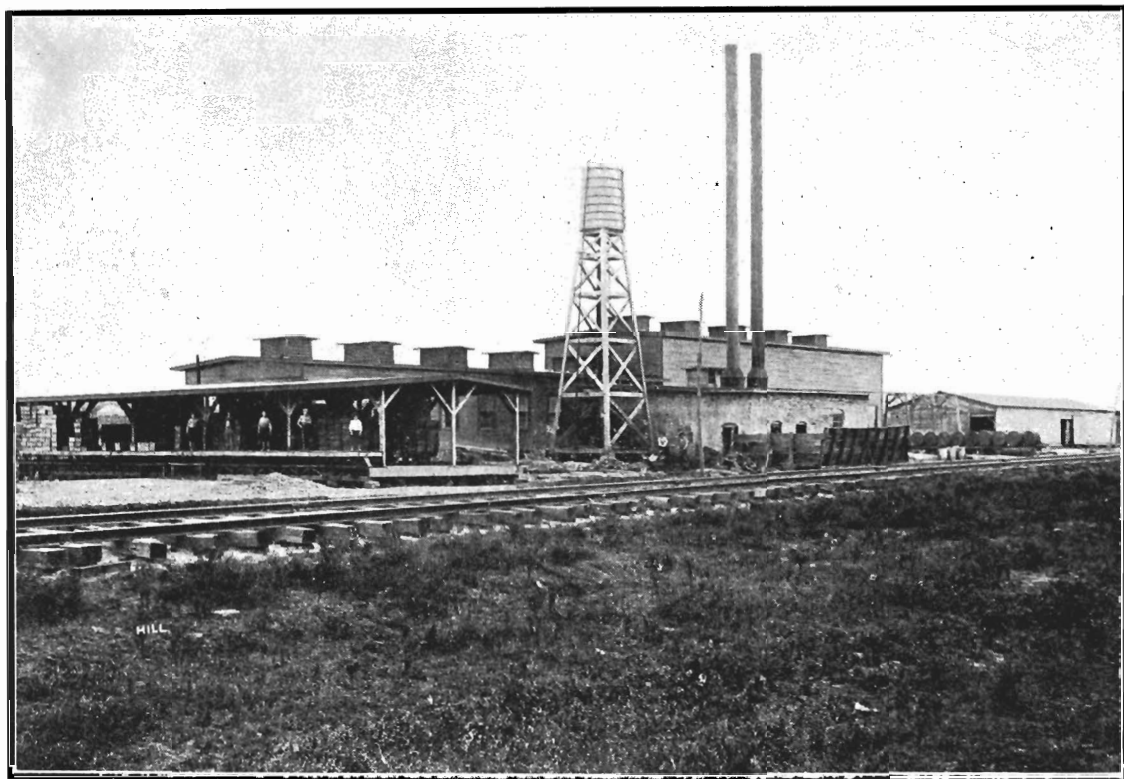
STREET SCENE SHOWING FOUR BRICK BUSINESS HOUSES UNDER CONSTRUCTION.

young orchard of both peaches and apples, as well as berries and small fruits of various kinds. The Illinois Valley, in which Prairie Grove is situated, is famous for producing fine mules, fat hogs, and unexcelled roadsters, saddle and draft horses. The breeding and shipping of these form one of the many industries of our highly favored locality.

Peaches, Tomatoes and small fruits of all kinds are being extensively grown, which will be shipped in their natural state or preserved or canned in our new twenty thousand dollar canning factory completed a few weeks ago, with a capacity of thirty-six thousand cans per day (ten hours). See two next cuts following. Many thousand bushels of wheat will also be shipped as grown or manufactured into flour in our mills above mentioned, one of which has only been completed a few months, and which has an elevator attached. Capacity of mill 80 barrels, and of elevator thirty thousand bushels. Railroad ties and timber of all descriptions are being extensively shipped. Altogether will bring to the citizens a vast amount of money which will be spent in Prairie Grove

FRUIT GROWING

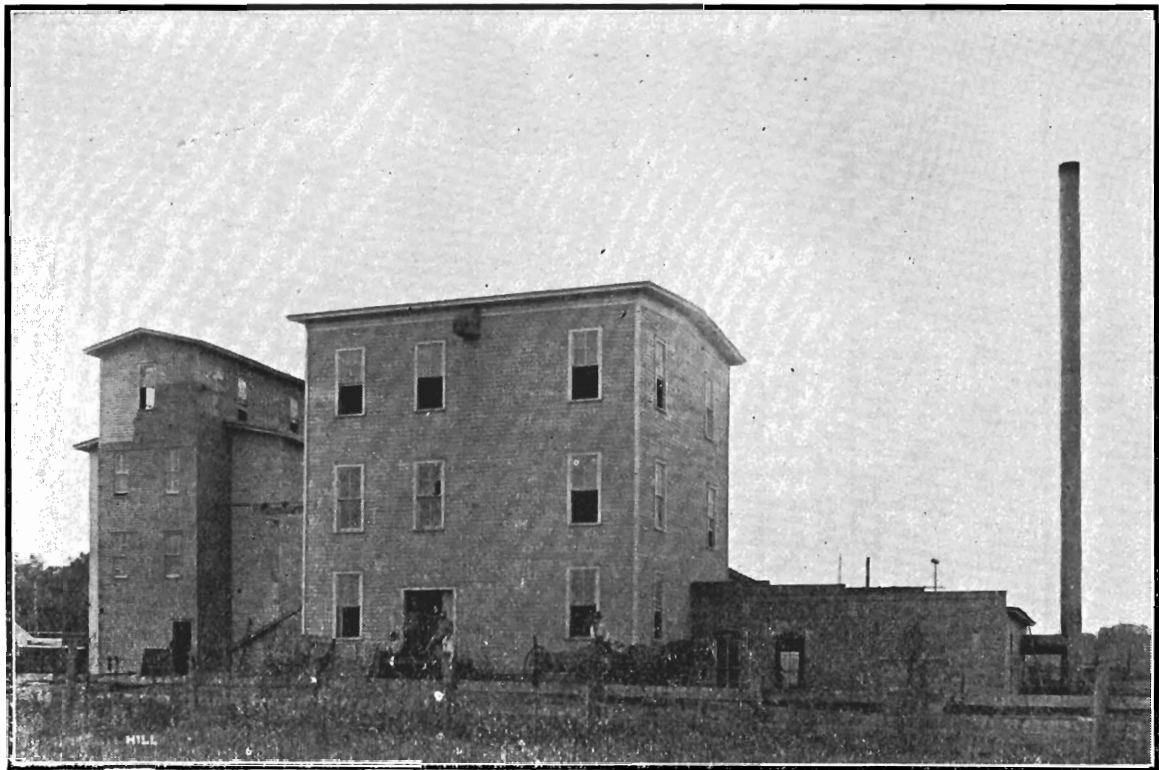
The merits of Northwest Arkansas can not be overdrawn as a fruit growing district. Scientific investigations have revealed the fact the best fruit orchards of the world are located in Northwest Arkansas and while our lands are very fertile, and we believe second to none in the production of grain, hay and all kinds of vegetables, the soil contains the peculiar pro-



PRAIRIE GROVE'S \$20,000.00 CANNING FACTORY.



A PEEP INTO A BUSY CORNER IN THE CANNING FACTORY.



PLANT OF L. C. McCORMICK MILL AND ELEVATOR CO.

perties which make it especially adapted to fruit growing, and it can be converted from a grain to a fruit farm without the loss of a single crop, as grain and small fruits can be profitably grown during the years of cultivation of the trees. There is no crop that is as remunerative to the owner as a fruit crop. They have been known to bring one hundred dollars per acre, and there is certainly no crop which is so little trouble to turn into money, as the buyers are ready to buy your fruit in orchard and gather the fruit themselves. Prairie Grove is located in one of the best fruit growing portions of this noted district.

THE OPENING DAY

The only thing that you will dislike about the Prairie Grove proposition, on the opening day, will be that you did not take the full limited number of five lots, as the splendid methods of advertising and selling the lots will bring hundreds of business men to the sale, and after they see the great resources and advantages of the town, they will cause the lots to bring many times the price paid for them by applicants.

IT IS WHAT YOU ARE LOOKING FOR

If you are a business man, Prairie Grove is the town you are looking for, because the agricultural wealth of countries is what builds powerful business enterprises and great cities, and Prairie Grove is unsurpassed in the state for its rich agricultural surroundings.

If you are a farmer, you can grow as much grain and hay to the acre, more fruits of all kind, have better water to drink, and lose fewer days work from sickness than any place in the state, yes, in the United States.



A STRAWBERRY FIELD. SHOWING APPLE ORCHARD IN BACKGROUND. AT PRAIRIE GROVE.

AS A SUMMER AND HEALTH RESORT

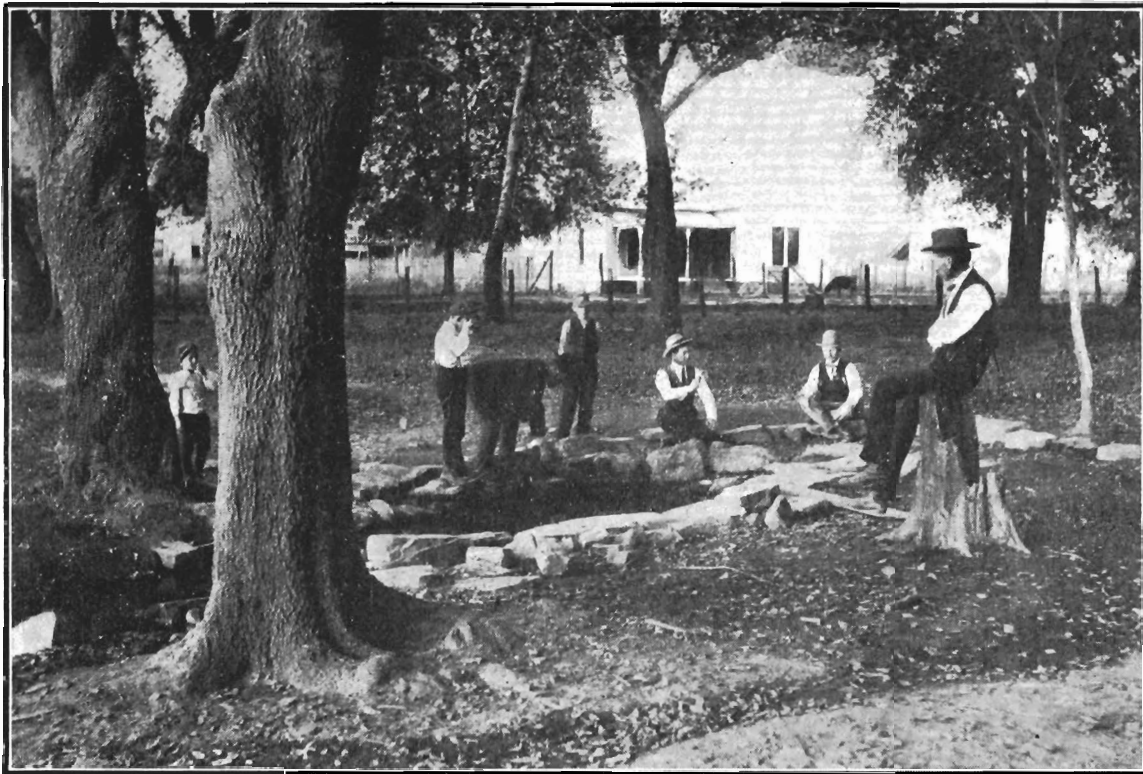
Though Prairie Grove is situated in the noted Illinois valley, its high altitude which is twelve hundred feet, its abundance of the best water in the State, its congenial climate, no summer too hot, no winter too cold, make it an ideal spot for a home; and not only has it an agricultural environment that will make it in a short time one the best business towns in the country, but its wonderful health producing features, as above indicated, are now, since it has Railroad facilities, for the first time being published to the world, which will soon place it at the top of the calendar, as a summer and health resort. Why then live in one country to get money and have to go to another once or twice a year to get health, when you can come to Prairie Grove and have them both served at the same table and on the same platter ?

RULES TO GOVERN APPLICATIONS

FIRST—You are not required to build on your property.

SECOND—Past experience has shown us that a diversity of people and opinions are what is required to develop and build quickly any town or country, and this being a fact, we will scatter our sales over as great a territory as our limited number of lots will permit, consequently only five lots will be sold to any one person.

THIRD—For every 15 lots applied for from one section or town the applicants therefor may elect one of their number to attend and represent them at the opening at Prairie Grove.



THE BIG SPRING, IN THE CENTER OF PRAIRIE GROVE.
An Ideal Spot for a Magnificent Hotel.

FOURTH—The Northwest Arkansas Realty and Development Co., will refund Railroad fare to Club Captains on arriving at Prairie Grove, and will furnish free transportation back to their homes.

FIFTH—Each applicant will be sent, free of charge, the PRAIRIE GROVE HERALD until after the opening and sale of the lots in the additions to the town of Prairie Grove.

SIXTH—Twenty days notice of the opening of the new additions to Prairie Grove will be given through the columns of the PRAIRIE GROVE HERALD.

SEVENTH—When Club Captains arrive at Prairie Grove they may take in the situation as it is, investigate the merits of our town, and after this the opening and distribution of lots will take place ; but before the distribution begins, if any applicant or representative therefor, after having made investigations above mentioned, desires, he can have his money refunded, which he has deposited to pay for lots.

EIGHTH—The Northwest Arkansas Realty and Development Co., will furnish WARRANTY DEED with CERTIFIED ABSTRACT OF TITLE and also an official plat of the city of Prairie Grove to every purchaser.

NINTH—The price of the lots will be \$60, and if taken on the installment plan, the payments will be as follows, viz: Ten dollars with application, fifteen dollars in twenty days, fifteen dollars in forty days and twenty dollars in sixty days.



QUARRY NO. 1. OF PRAIRIE GROVE MARBLE WORKS. 5 MILES EAST.

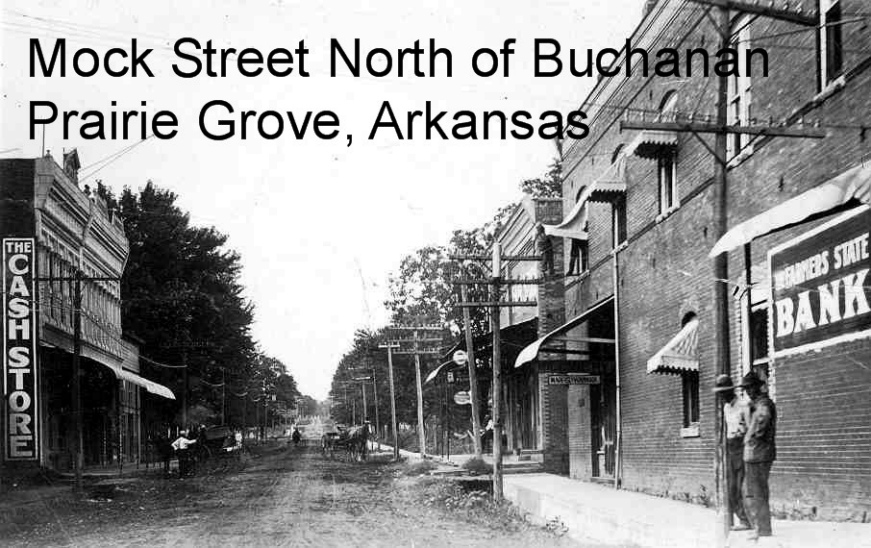
Prairie Grove Methodist Church







Mock Street North of Buchanan Prairie Grove, Arkansas





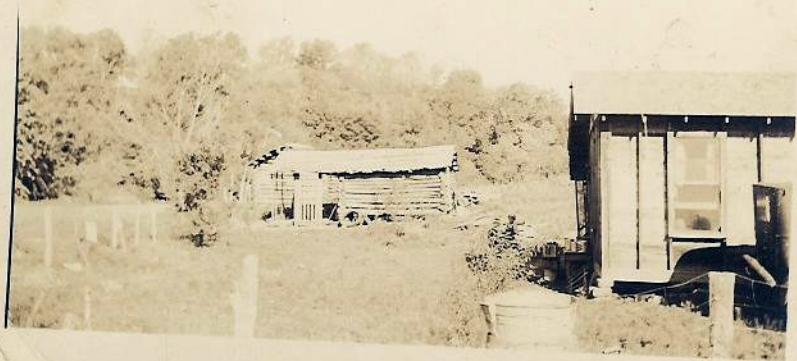


Looking West On Buchanan St. Prairie Grove Ark.



JW. ARMY
COOPER

FIRST HOUSE WE BUILT WHEN CAME TO ARIZONA
ABOUT FEB. 1932





Mobley Cave Home
South of Prairie Grove

Back to School, Back Then



Courtesy photo

School children at the Apple Hill School prepare for another day of class with a good face scrubbing from Martha Deale Grant in this 1924 photograph uncovered by area resident and historian Bob Keen. The girl standing behind the little boy is identified as Leatha Grant.

WAGGONER FAMILY EYE CARE

Michael Waggoner, O.D.

Exam & Daily Wear Contacts

Starting at \$89⁰⁰

Includes: Exam, Fitting, Contacts, Solution
Follow-up Care

2876 West 6th St. •

Fayetteville, AR 72701

(501) 582-EYES

THOMAS JEWELRY

Family Business Since 1933

FULL SERVICE

JEWELRY & WATCH REPAIR

Custom & One-of-a-Kind Designs

442-3500

2139 W. 6th St. • Fayetteville, AR 72701

Exceptional Quality - Integrity - Dependability

Ozark

Newspapers,

Inc.

Blake House Build about 1835





Buchanan Place - Prairie Grove



Abner Mitchell Keen Built 1872 on Skylight Mt

Confederate Cemetery - Fayetteville,
Arkansas





COVE CREEK 118

The student body in Cove Creek School in 1934. From left, top row, Lorena David Faddis (teacher), Irene Carmack, Marie Bradley, Gladys Carte, Harry Clyde Williams, Olive Hodges, John Abshier; middle row, Kenneth Cooper, Lillian Hodges, Tommy Abshier, Helen and Eldon Lacey, Irene Bradley, Naomi and Marshall Cooper, J. C. Gott, Marshall Leach; front row, Tink Hodges, Vilina, Jack, Velma, Faddis and Cletis Phillips, Cordie Gachus, L. D. Gott, --- Clarida, --- Hodges, --- Carte, --- Hodges.

COVE CREEK 118



This picture was taken on an outing of Cove Creek students in 1933. Students are from left, front row, Helen Phillips, Nelma Cooper, Mary Lena Lacey; second row, Olive Hodge, Mae Carte, Tommy Abshier; third row, Kenneth and Marshall Cooper, Orval Abshier, Conrad Hodge, Eldon Lacey; fourth row, ?, Willard Clarida, Roy Hodge and John Abshier.



Top Picture: Teacher Mattie ?, Blank Brown, Oscar Loftin, Vernin Loftin, Mrs. Brown.

Front Row: Bird Cantrell, Ella Blank, Irene Loftin, Charlie Loftin, Mamie Clanton, Tressie Quinton, Rena Quinton, Ray Loftin, Icey Quinton.

Back Row: Blank Cline, Ella Cantrell, May Clanton, Icey Quinton Bird Cantrell, Vernie Pierce, Charlie Loftin, Irene Loftin, Tressie Quinton, Thelma Clanton.

Front Row: Unknown, Oval Quinton, Reva Morning, Othie Quinton, Rena Quinton, Clyde Loftin, Cathal Clanton.

GARRETT CREEK SCHOOL

*Picture taken about 1909-1910
Picnic South of pappy's place*



*#3 Edgar, #7 Fannie, #9 James P. #12 Lester Crouch (Fannie brother)
setting laddies #4 Leona, standing #2 Armstrong, #15 Nancy*

*The old homestead.
Located in Washington
County, Arkansas. Near Prairie
Grove*



BEVERLY

Prairie Grove, Arkansas

ADMISSIONS:
Adults 25c Including Tax
Children 11c Including Tax
Friday - Saturday 11c to All

SHOWS AT:
8:45—Sunday Night
7:30—Week Night
2:00—Saturday Matinee
7:30 & 9:00—Sat. Night

19 NOVEMBER 43

SUN.

MON.

TUE.

WED.

THU.

FRI.

SAT.

1

2

3

4

5

6



7

8

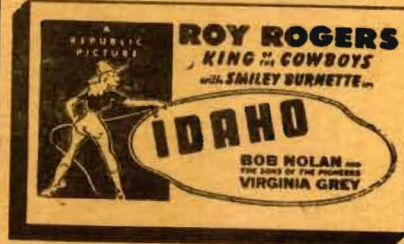
9

10

11

12

13



14

15

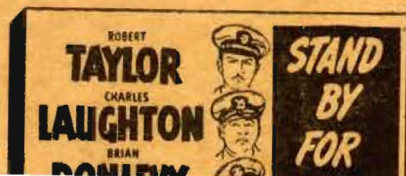
16

17

18

19

20





Hog Eye Church School House





Jim & Annie Phillips Cooper

JIM COOPER ANNIE COOPER



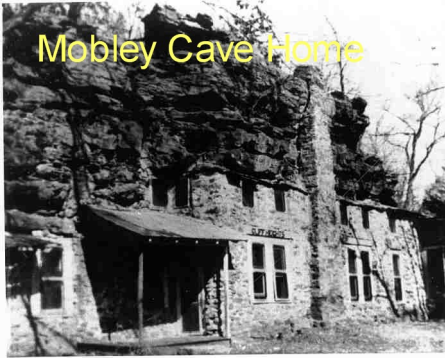
Kenneth Cooper Leoda Phillips



Irene Carmack Hm Cove Creek



Mobley Cave Home





Mobley Cave Home
South of Prairie Grove

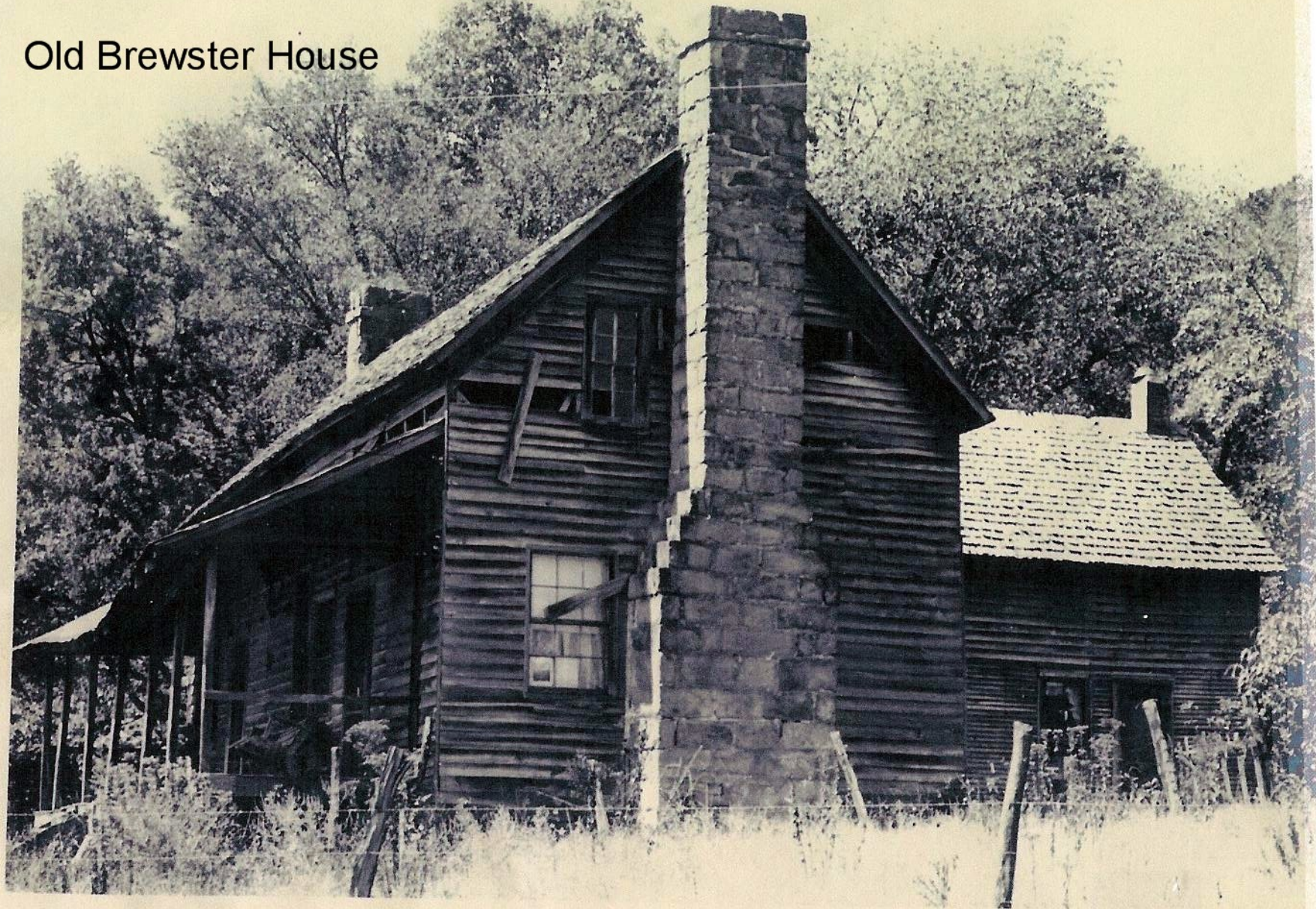
Mobley Family





Battlefield Commission

Old Brewster House





J.T. WAMPLER / THE MORNING NEWS

Old County Home

Old Hogeye Hotel





Old Prairie Grove Jail



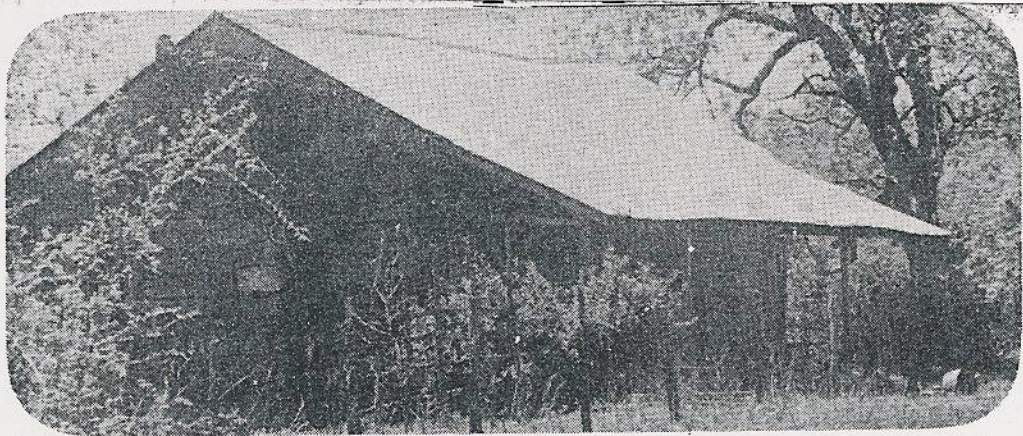
Old Parks House near Hogeve
stage stop

Kelly Canning Factory - Prairie Grove, AR





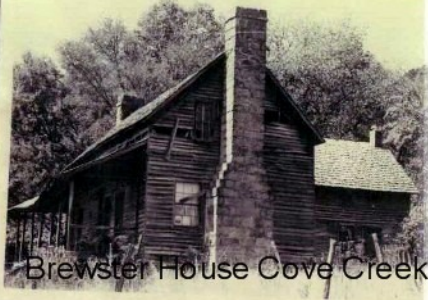
Prairie Grove Hardware Company and the Bank of Prairie Grove at the turn of the century.



The Strickler house is vacant now, with only the ghosts from its hey-day in 1858 still lingering around. In those years riders from the Overland Mail Company were sure to be able to get a fresh team of horses when they reached this stop. Mr. Charles Sherry, who was born in this house was the last of the Strickler descendants to live there.

[Staff Photo]

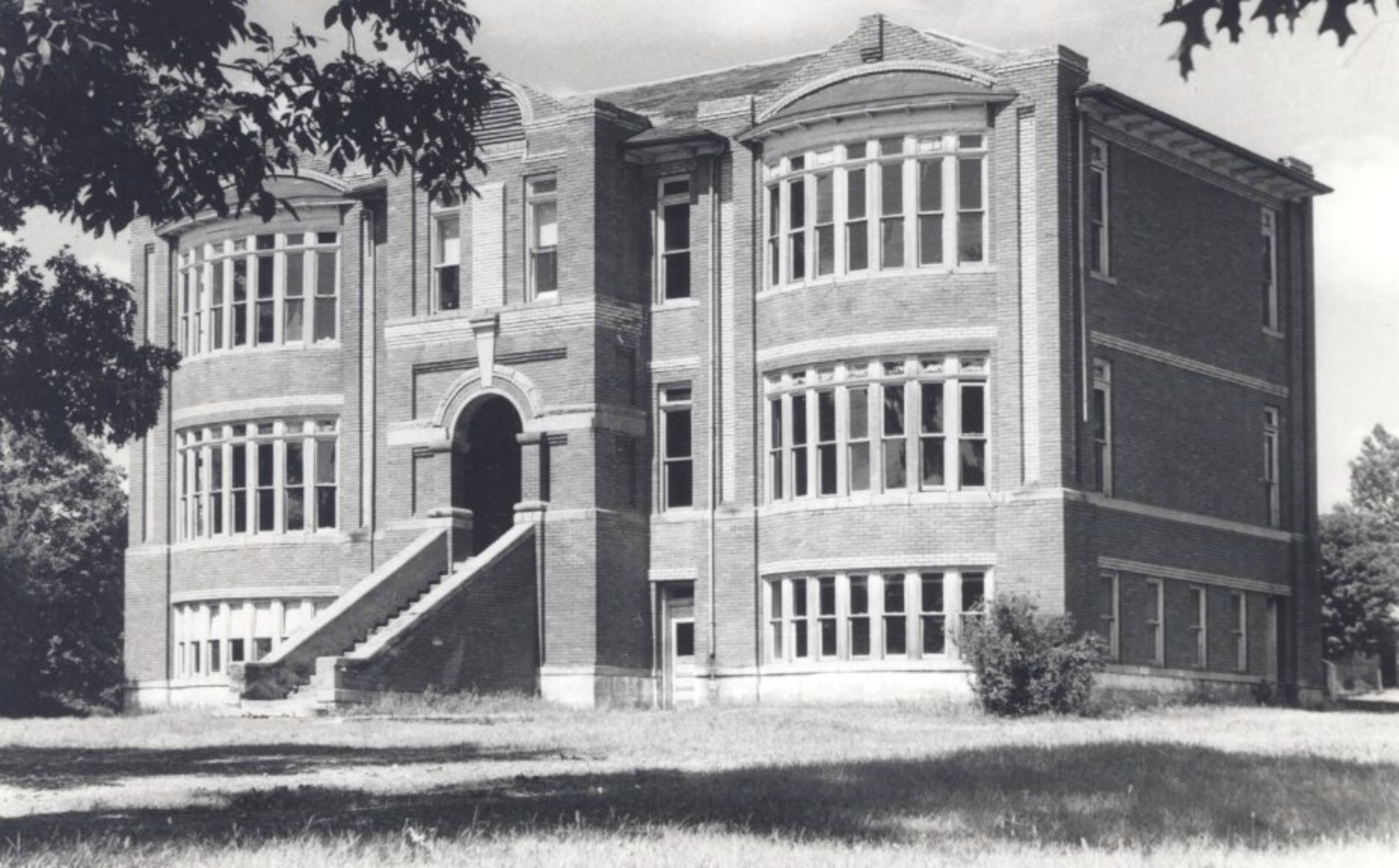




Brewster House Cove Creek

B. H. Harrison
Aug 8, 1901





Jim Strickler early 1900 & His Dad at the
Strickler Wagon Factory in Prairie Grove



Florida Jane Beaver Hart - Doward Hart - Uncle John Beaver

February, 1915

**Home rebuilt and now occupied by
John Robert Hart**

